




27 Oriente #812 Col. Francisco I. Madero Atlixco Puebla
Tel: 244 44 53316 Fax:244 44 6392 Nextel: 52*270357*1
Email: confetexa@prodigy.net.mx

CARTA DE COLORES & Telas

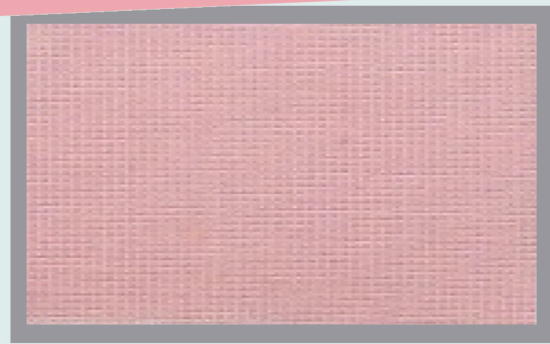
 Mas Durabilidad
Mas Confort
Mas Rentable

27 Oriente #812 Col. Francisco I. Madero Atlixco Puebla
 Tel: 244 44 53316 Fax:244 44 6392 Nextel: 52*270357*1
 Email: confectexa@prodigy.net.mx

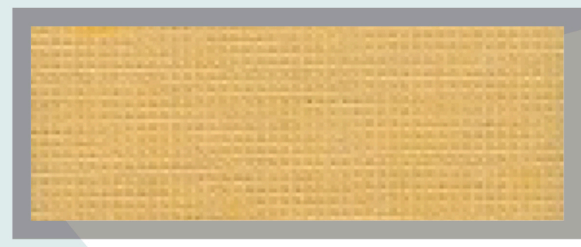
						
TONO: Blanco		TONO: Hueso		TONO: Paja		
						
TONO: Jade	TONO: Oro	TONO: Melon	TONO: Vino	TONO: Pizarra	TONO: Rosa	TONO: Cielo
						
TONO: Agua	TONO: Coral	TONO: Fiusha	TONO: Verde lotus	TONO: Bugambilia	TONO: Plumbago	TONO: Gris Jaspe
						
TONO: Beigue	TONO: Azul	TONO: Francia	TONO: Morado	TONO: Botella	TONO: Ladrillo	TONO: Gris Oscuro
						
TONO: Pasto	TONO: Lila	TONO: Amarillo	TONO: Cafe	TONO: Gris	TONO: Negro	TONO: Mamey
						
TONO: Verde limon	TONO: Naranja	TONO: Turquesa	TONO: Marino	TONO: Marino Oscuro	TONO: Rojo	TONO: Khaky

Mas elegancia, mas confort, mas durables

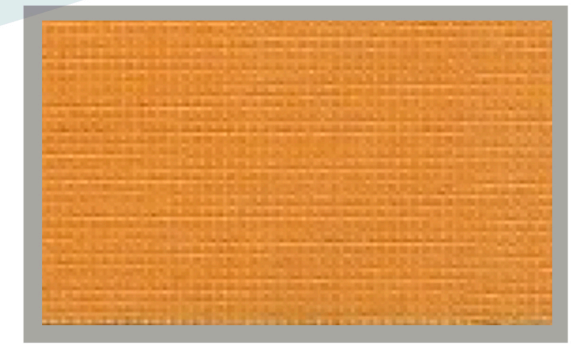
27 Oriente #812 Col. Francisco I. Madero Atlixco Puebla
 Tel: 244 44 53316 Fax:244 44 6392 Nextel: 52*270357*1
 Email: confectexa@prodigy.net.mx



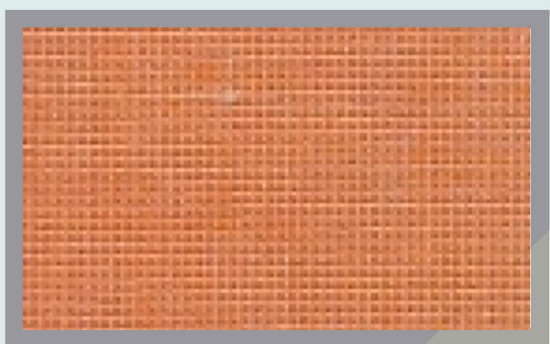
TONO: Rosa



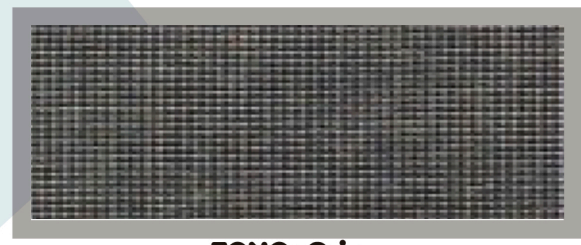
TONO: Canario



TONO: Orange



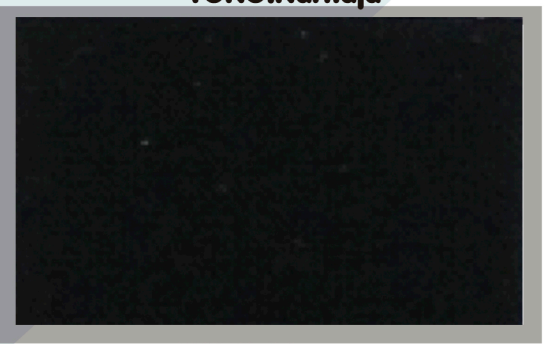
TONO:Naranja



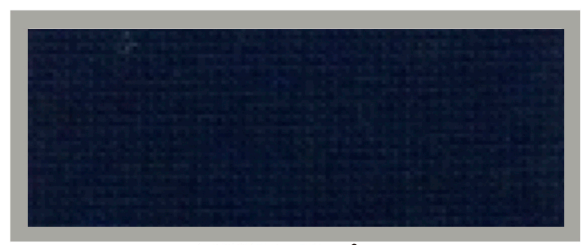
TONO: Gris



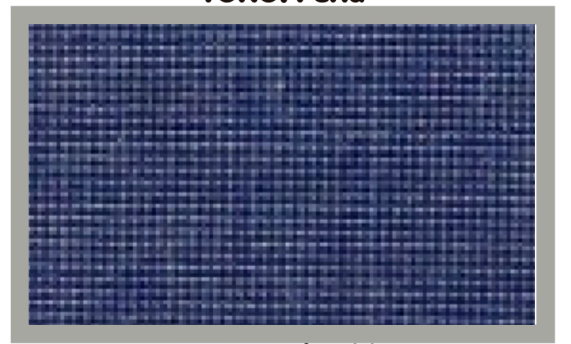
TONO: Perla



TONO: Negro



TONO: Marino



TONO: King blue



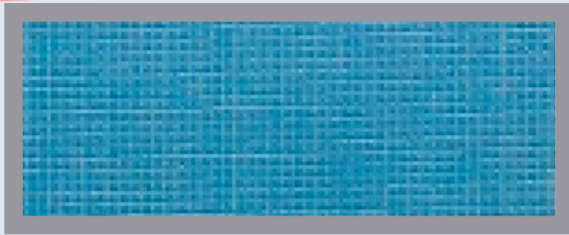
TONO: Vino

Mas Durabilidad, Mas Confort, Mas Rentable

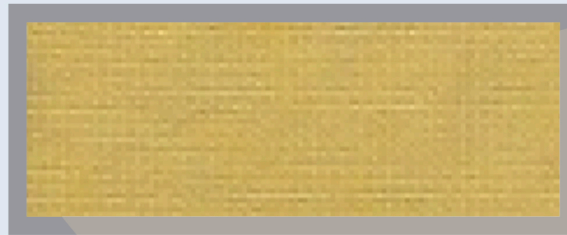
CARTA DE COLORES

TIPO DE TELA : Popelina Premiun
COMPOSICION: 50% poliester
50% algodón

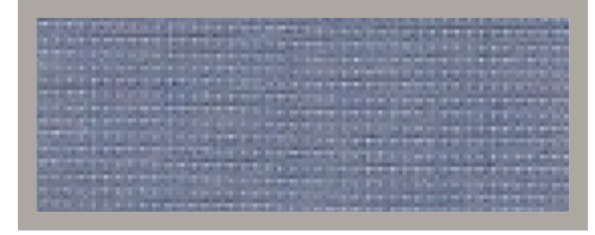
27 Oriente #812 Col. Francisco I. Madero Atlixco Puebla
 Tel: 244 44 53316 Fax:244 44 6392 Nextel: 52*270357*1
 Email: confectexa@prodigy.net.mx



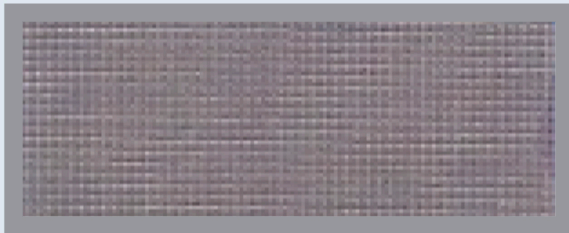
TONO: Agua



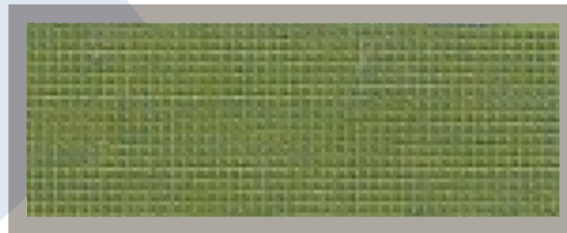
TONO: Amarillo



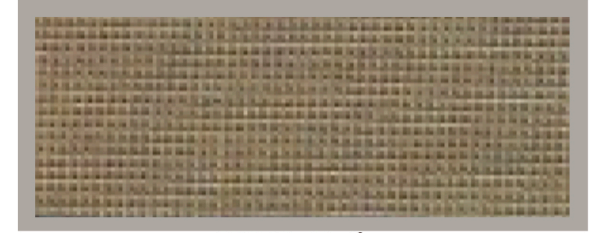
TONO: Violeta



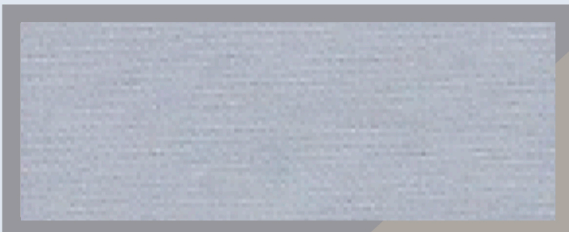
TONO: Perla



TONO: Olivo thir



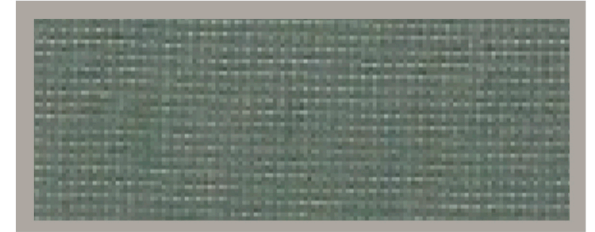
TONO: Vetiver



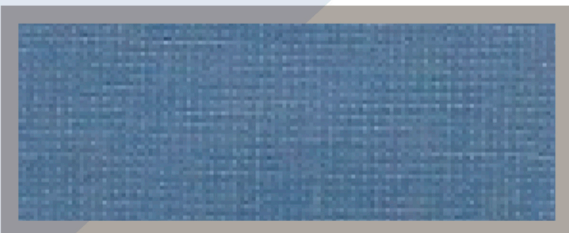
TONO: Blanco



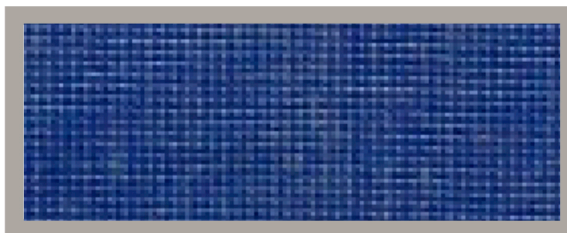
TONO: Cielo



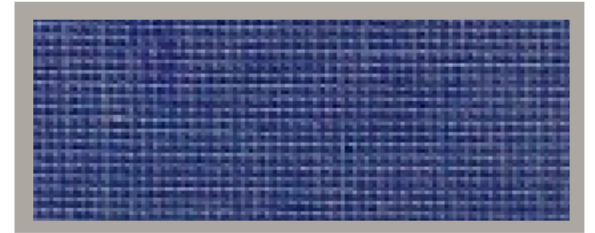
TONO: Viena



TONO: Francielo



TONO: Oceano



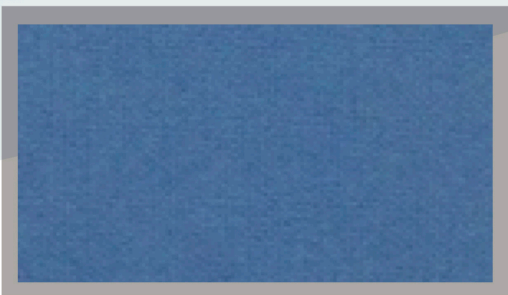
TONO: Grecia

Mas Durabilidad, Mas Confort, Mas Rentable

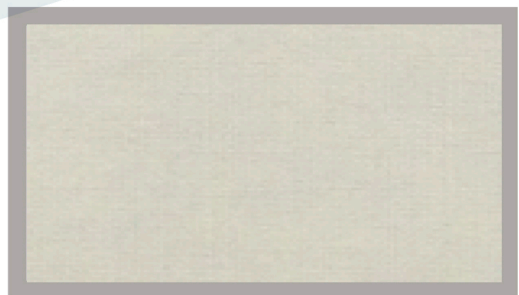
27 Oriente #812 Col. Francisco I. Madero Atlixco Puebla
 Tel: 244 44 53316 Fax:244 44 6392 Nextel: 52*270357*1
 Email: confectexa@prodigy.net.mx



TONO: Cielo



TONO: Plumbago



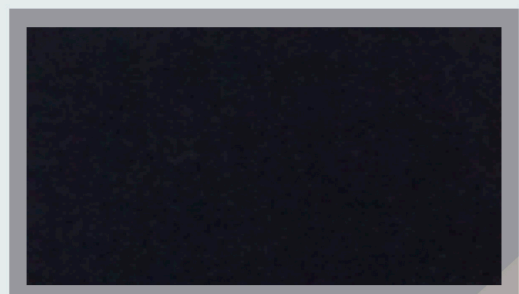
TONO: Hueso



TONO: Lila



TONO: Francia



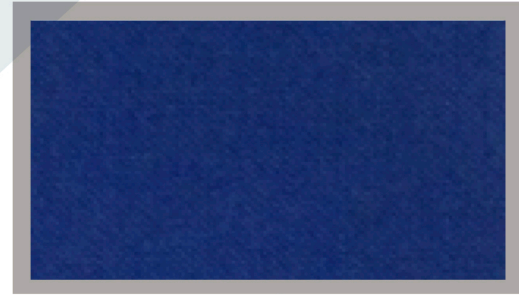
TONO: Azul Marino



TONO: Rojo



TONO: Naranja



TONO: Pizarra

Mas elegancia, mas confort, mas durables

27 Oriente #812 Col. Francisco I. Madero Atlixco Puebla
 Tel: 244 44 53316 Fax: 244 44 6392 Nextel: 52*270357*1
 Email: confectexa@prodigy.net.mx



TONO : Blanco



TONO: Arena



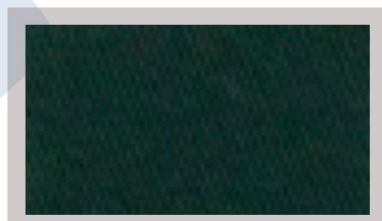
TONO: beige



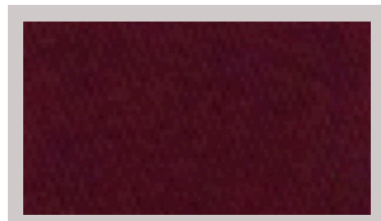
TONO: Militar



TONO: Olivo Oscuro



TONO: Botella



TONO: Vino



TONO: Gris Perla



TONO: Gris Oscuro



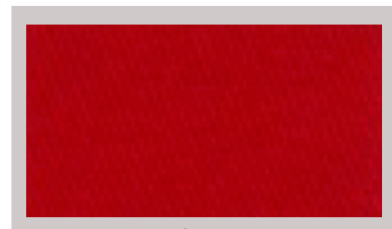
TONO: Acero



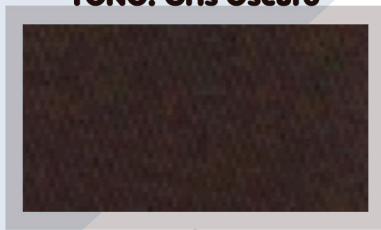
TONO: Rey



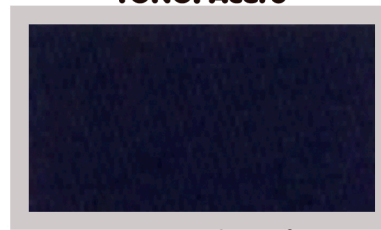
TONO : Naranja



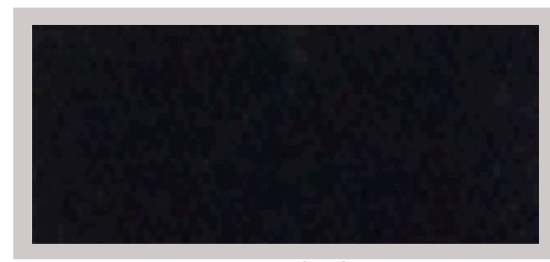
TONO: Rojo



TONO: Cafe



TONO: Azul Marino



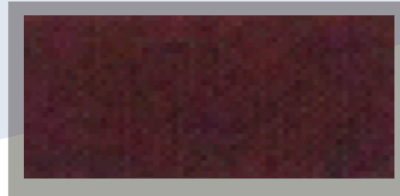
TONO: Black

Mas Durabilidad, Mas confort, Mas Rentable

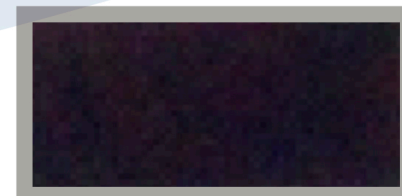
27 Oriente #812 Col. Francisco I. Madero Atlixco Puebla
 Tel: 244 44 53316 Fax:244 44 6392 Nextel: 52*270357*1
 Email: confectexa@prodigy.net.mx



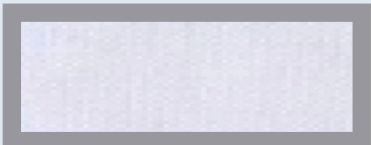
TONO: Bandera



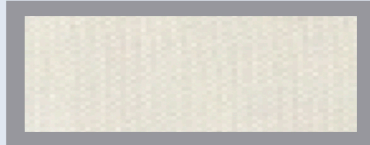
TONO: Cafe



TONO: Negro



TONO: Blanco



TONO: Hueso



TONO: Paja



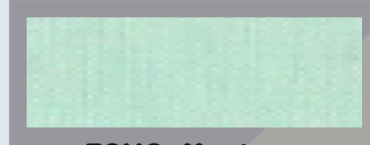
TONO: Rosa



TONO: Lila



TONO: Cielo



TONO: Menta



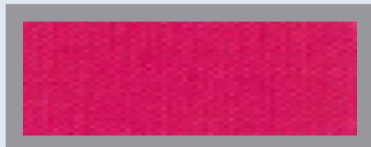
TONO: Limon



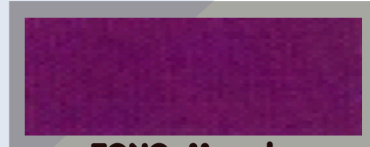
TONO: Mango



TONO: Naranja



TONO: Fiusha



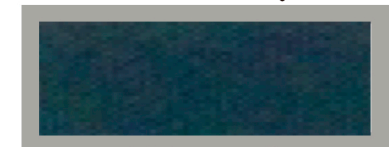
TONO: Morado



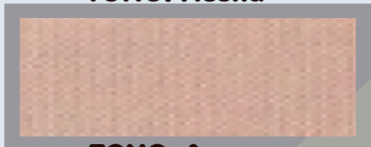
TONO: Rey



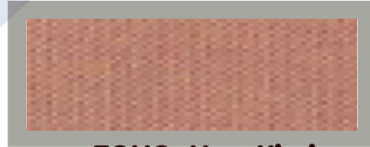
TONO: Electrico



TONO: Botella



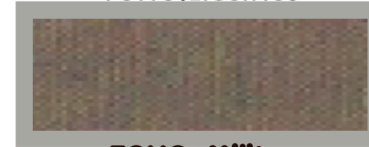
TONO: Arena



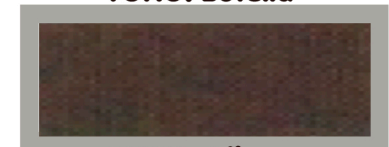
TONO: New Khaky



TONO: Beigue



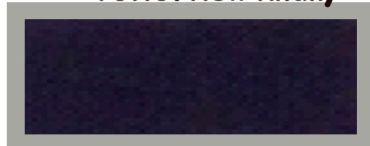
TONO: Militar



TONO: Olivo



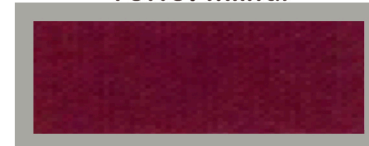
TONO: Rojo



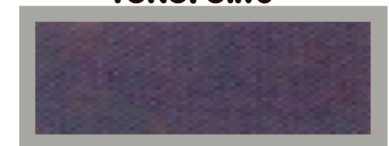
TONO: Marino



TONO: Gris Perla



TONO: Vino



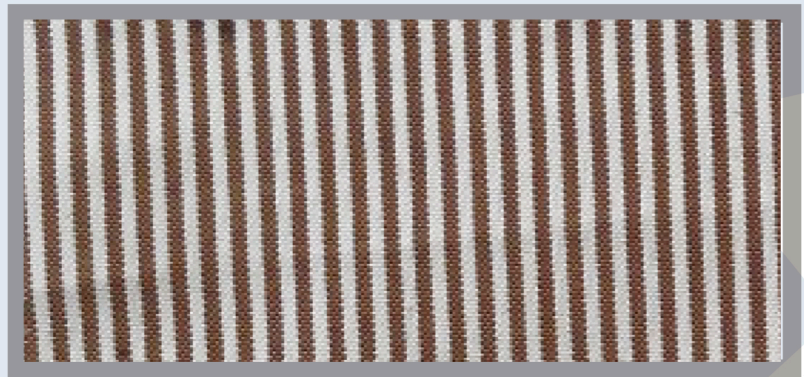
TONO: Oxford

Mas Durabilidad, Mas Confort, Mas Rentable

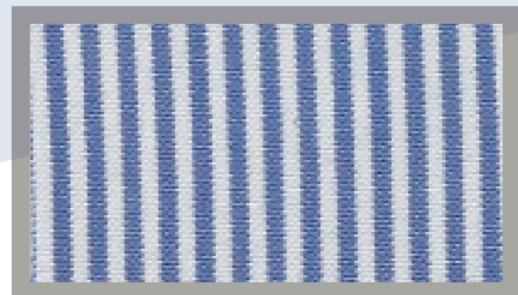
CARTA DE COLORES

TIPO DE TELA : 100 Rayas
COMPOSICION: 80% Poliester
20% Algodon

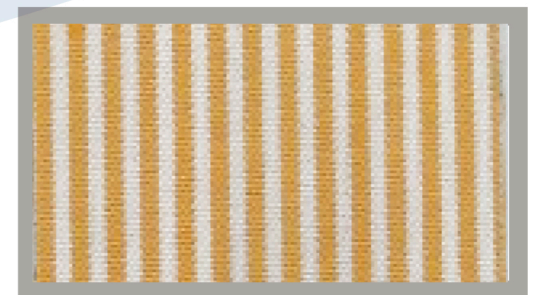
27 Oriente #812 Col. Francisco I. Madero Atlixco Puebla
 Tel: 244 44 53316 Fax:244 44 6392 Nextel: 52*270357*1
 Email: confectexa@prodigy.net.mx



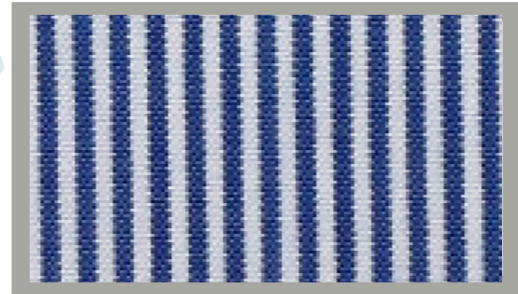
TONO: Cafe



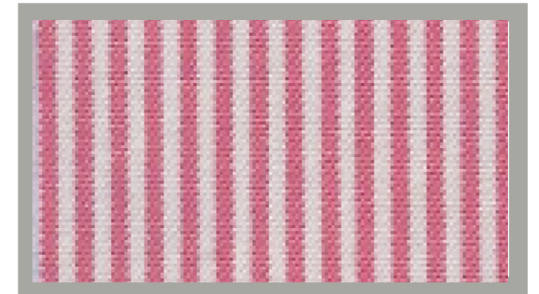
TONO: Azul Cielo



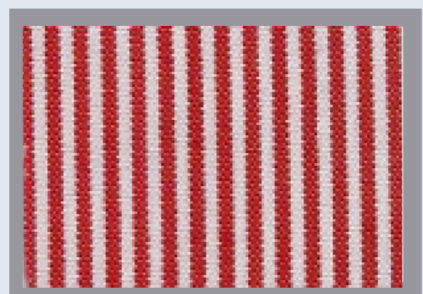
TONO: Amarillo



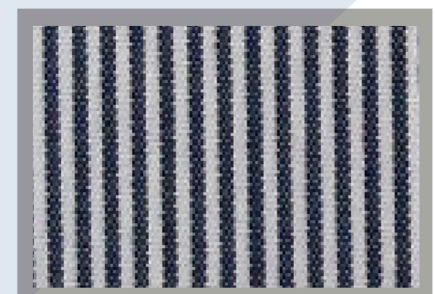
TONO: Rey



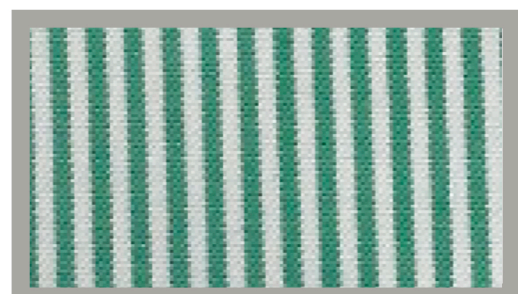
TONO: Rosa



TONO: Rojo



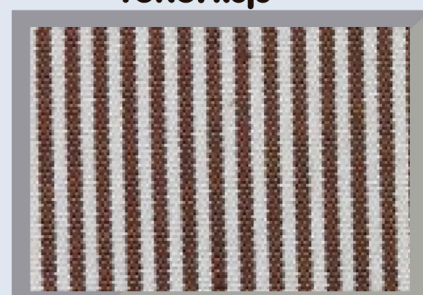
TONO: Azul Marino



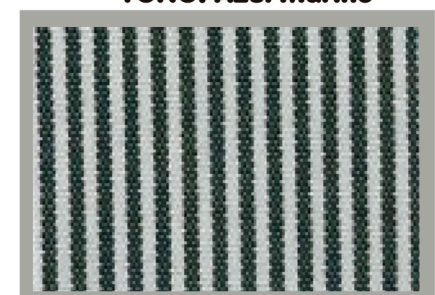
TONO: Verde Bandera



TONO: Naranja



TONO: Cafe



TONO: Verde Botella

Mas elegancia, mas confort, mas durables

27 Oriente #812 Col. Francisco I. Madero Atlixco Puebla
 Tel: 244 44 53316 Fax:244 44 6392 Nextel: 52*270357*1
 Email: confectexa@prodigy.net.mx

				
TONO : Blanco	TONO : Stone	TONO : Arena	TONO : Beigue	TONO : Brithish khaky
				
TONO : Khaky	TONO : Sage	TONO : Olivo Oscuro	TONO : Negro Olivo	TONO : Chocolate
				
TONO : Olivo	TONO : Gris Oscuro	TONO : Marino	TONO : Navy	TONO : Negro
				
TONO : Naranja	TONO : Orange	TONO : Rey	TONO : Rojo	

Mas Durabilidad, Mas confort, Mas Rentable

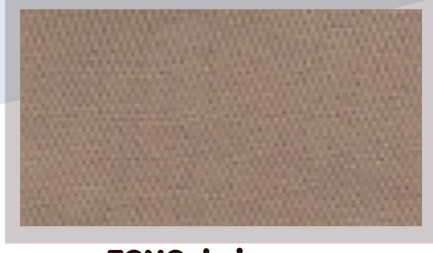
27 Oriente #812 Col. Francisco I. Madero Atlixco Puebla
 Tel: 244 44 53316 Fax:244 44 6392 Nextel: 52*270357*1
 Email: confectexa@prodigy.net.mx



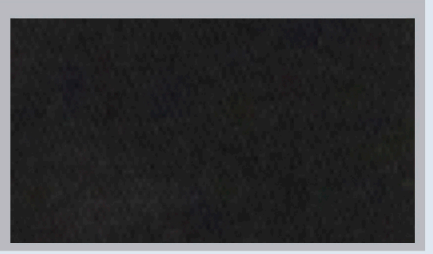
TONO : Blanco



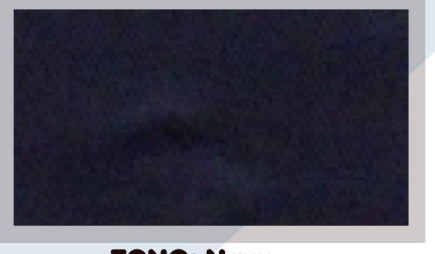
TONO: Arena



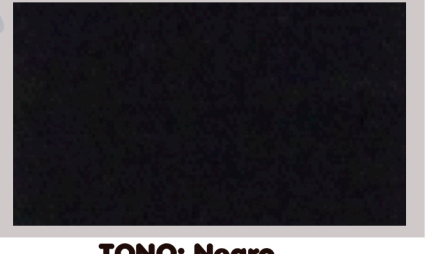
TONO: beige



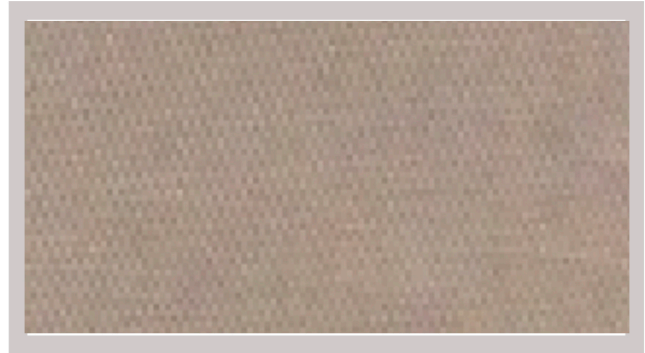
TONO : Negro Oliva



TONO: Navy



TONO: Negro



TONO : Late



TONO : Rojo



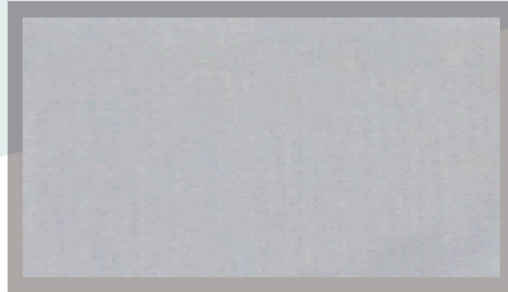
TONO : Rey

Mas Durabilidad, Mas confort, Mas Rentable

27 Oriente #812 Col. Francisco I. Madero Atlixco Puebla
 Tel: 244 44 53316 Fax:244 44 6392 Nextel: 52*270357*1
 Email: confectexa@prodigy.net.mx



TONO: Cielo



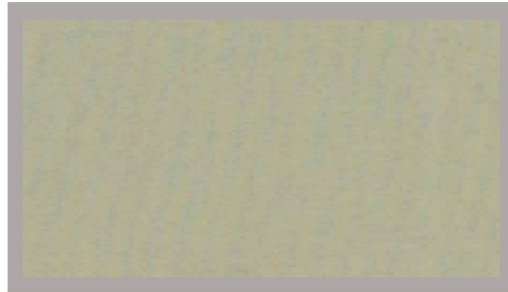
TONO: Blanco



TONO: Rosa



TONO: Hueso



TONO: Paja



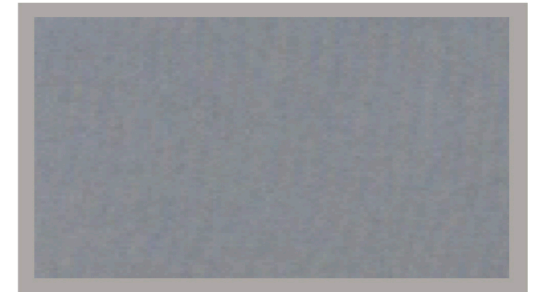
TONO: Beigue



TONO: Menta



TONO: Cemento



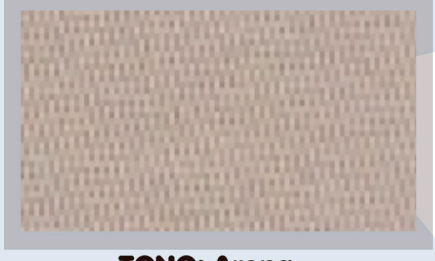
TONO: Gris

Mas elegancia, mas confort, mas durables

27 Oriente #812 Col. Francisco I. Madero Atlixco Puebla
 Tel: 244 44 53316 Fax:244 44 6392 Nextel: 52*270357*1
 Email: confectexa@prodigy.net.mx



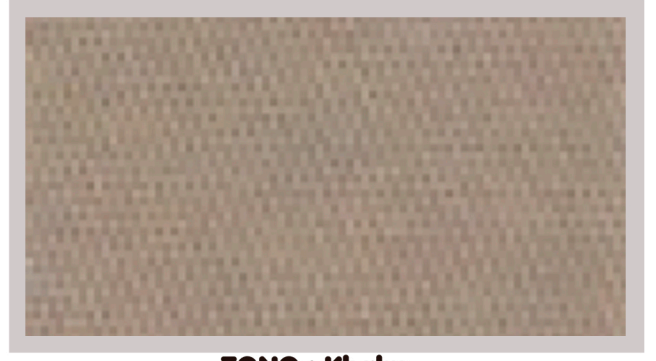
TONO : Blanco



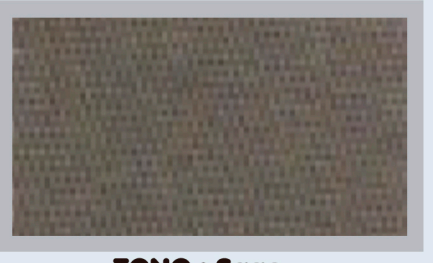
TONO: Arena



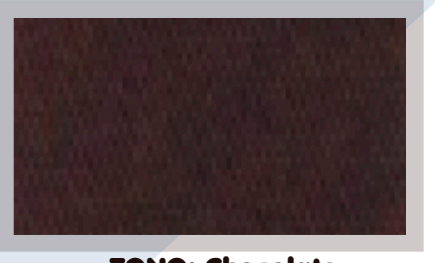
TONO: Stone



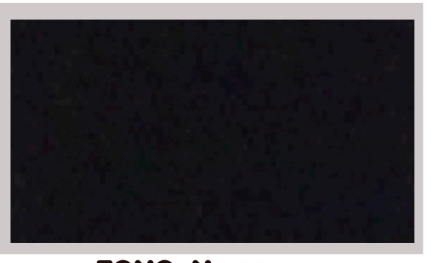
TONO : Khaky



TONO : Sage



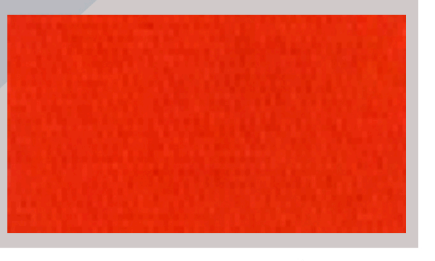
TONO: Chocolate



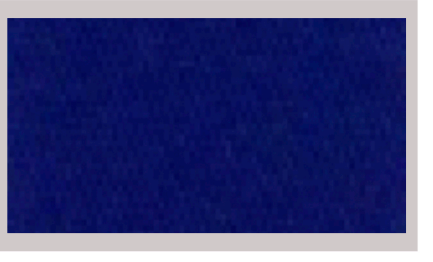
TONO: Negro



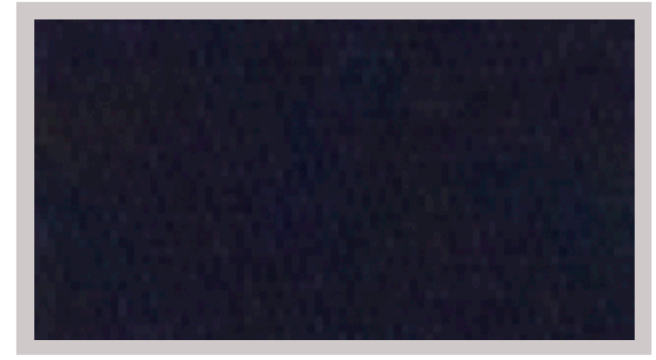
TONO : Rojo



TONO : Naranja



TONO : Rey



TONO : Marino

Mas Durabilidad, Mas confort, Mas Rentable

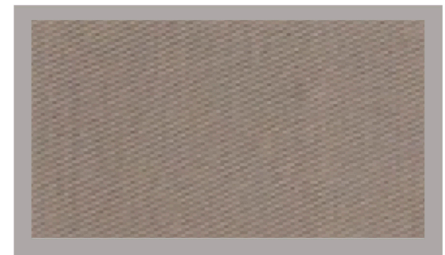
27 Oriente #812 Col. Francisco I. Madero Atlixco Puebla
 Tel: 244 44 53316 Fax:244 44 6392 Nextel: 52*270357*1
 Email: confectexa@prodigy.net.mx



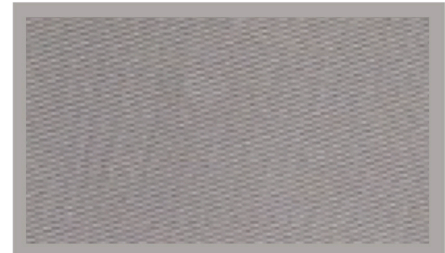
TONO : Stone



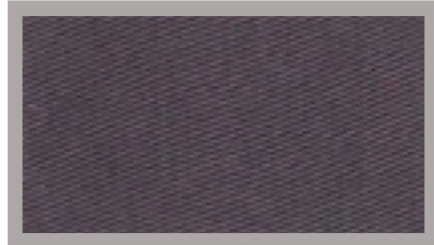
TONO: Arena



TONO: Beigue



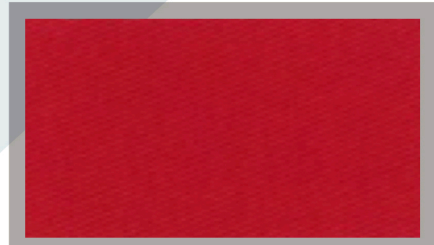
TONO: Gris Perla



TONO : Gris Oscuro



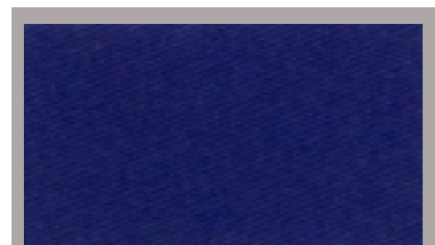
TONO: Olivo Oscuro



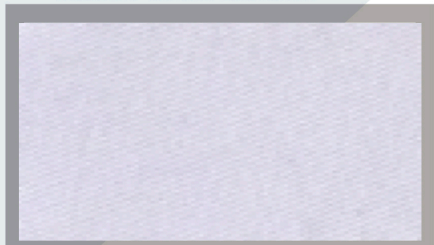
TONO: Rojo



TONO: Mango



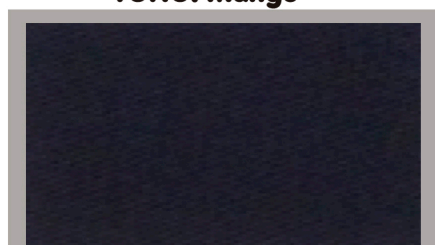
TONO: Rey



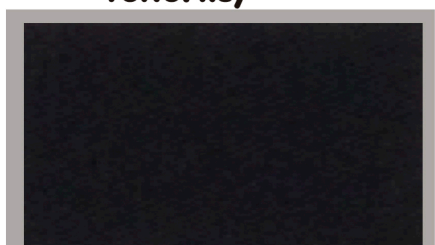
TONO: Blanco



TONO: Marino



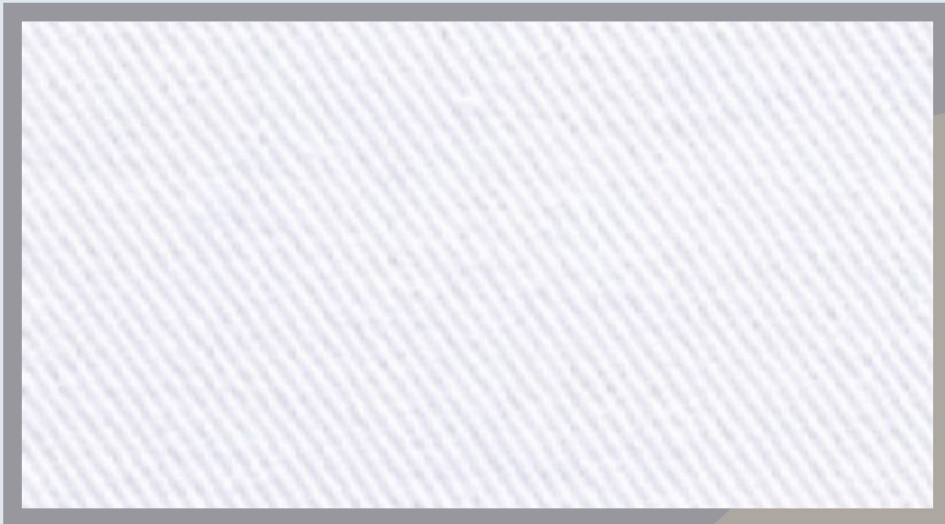
TONO: Navy



TONO: Negro

Mas elegancia, mas confort, mas durables

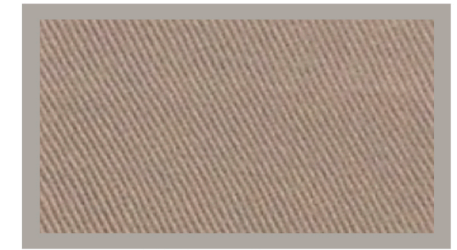
27 Oriente #812 Col. Francisco I. Madero Atlixco Puebla
 Tel: 244 44 53316 Fax:244 44 6392 Nextel: 52*270357*1
 Email: confectexa@prodigy.net.mx



TONO : Blanco



TONO: Arena



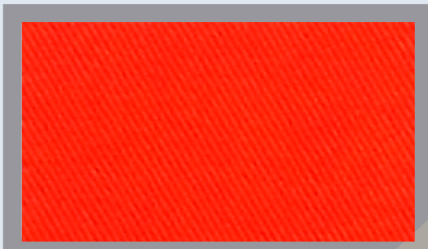
TONO : Beigue



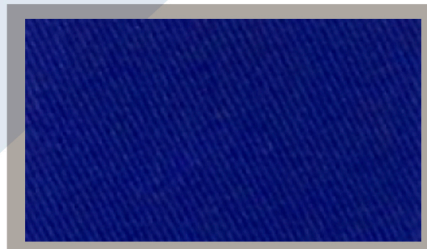
TONO: Khaky



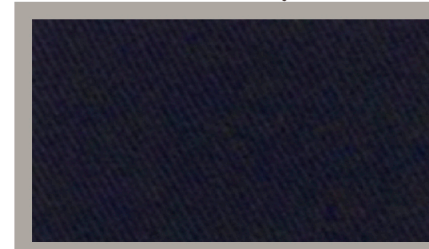
TONO: Olivo Oscuro



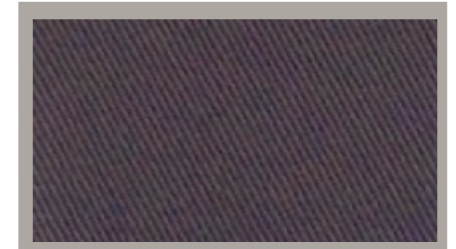
TONO: Narnaja



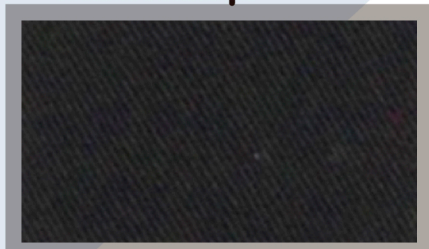
TONO: Rey



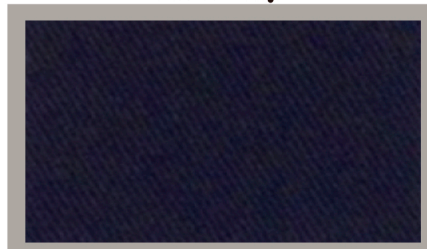
TONO: Navy



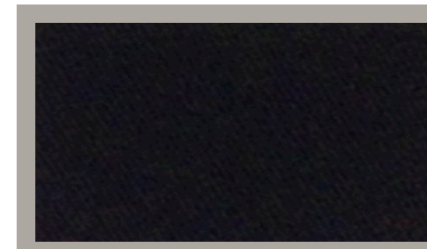
TONO: Gris oscuro



TONO: Negro Olivo



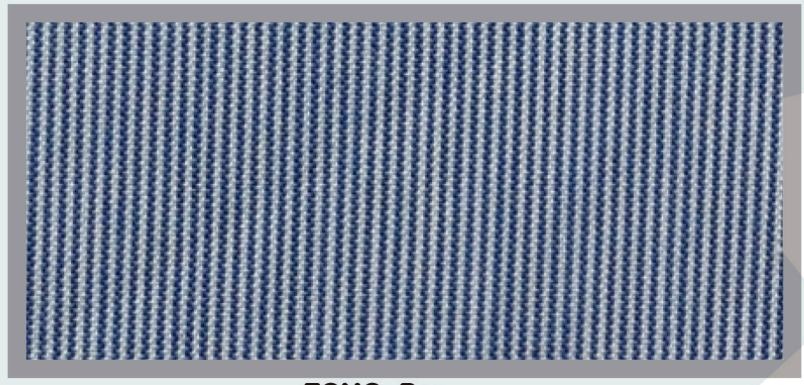
TONO: Marino



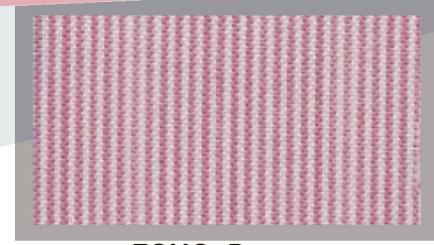
TONO: Negro

Mas elegancia, mas confort, mas durables

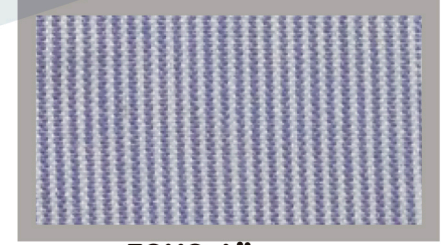
27 Oriente #812 Col. Francisco I. Madero Atlixco Puebla
 Tel: 244 44 53316 Fax:244 44 6392 Nextel: 52*270357*1
 Email: confectexa@prodigy.net.mx



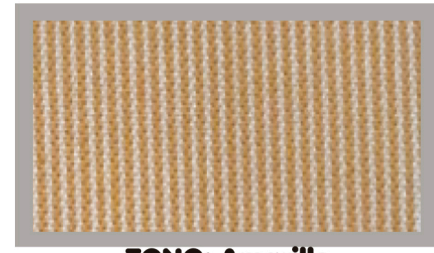
TONO: Rey



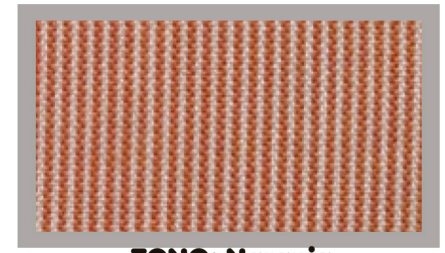
TONO: Rosa



TONO: Lila



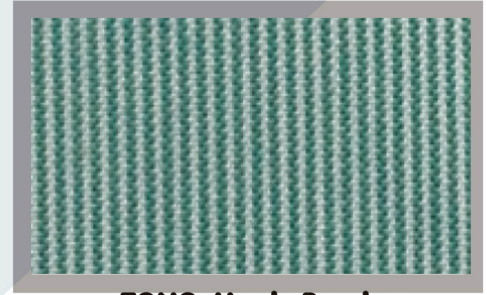
TONO: Amarillo



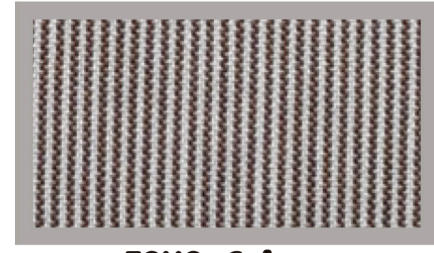
TONO: Naranja



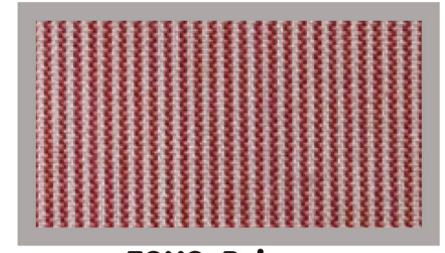
TONO: Verde Agua



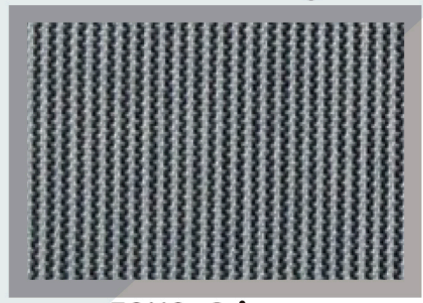
TONO: Verde Bandera



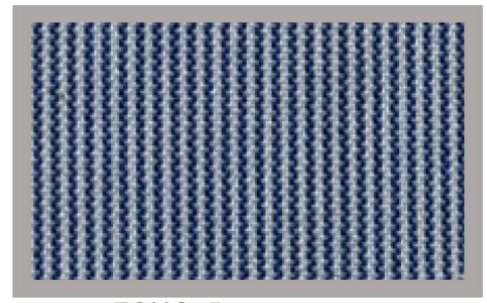
TONO: Cafe



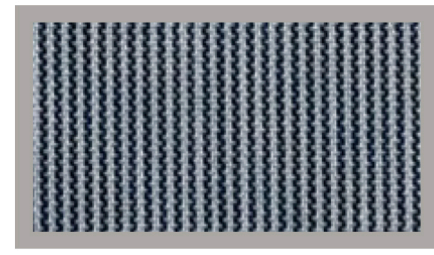
TONO: Rojo



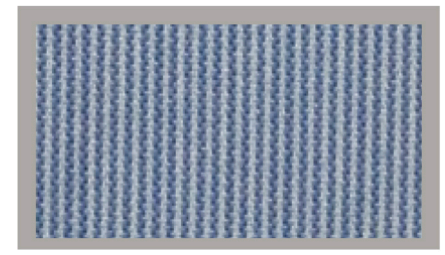
TONO: Gris



TONO: Rey



TONO: Negro



TONO: Cielo

Mas elegancia, mas confort, mas durables

CARTA DE COLORES

TIPO DE TELA : Oxford Colorido
COMPOSICION: 40% poliester
60% algodón

27 Oriente #812 Col. Francisco I. Madero Atlixco Puebla
 Tel: 244 44 53316 Fax:244 44 6392 Nextel: 52*270357*1
 Email: confectexa@prodigy.net.mx



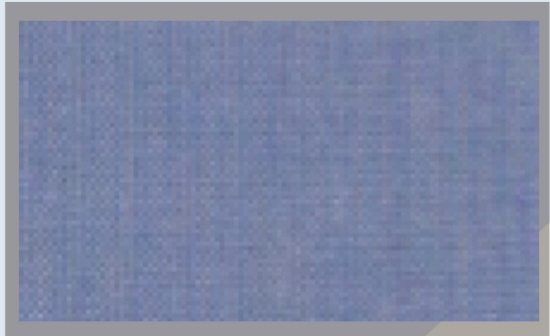
TONO: Menta



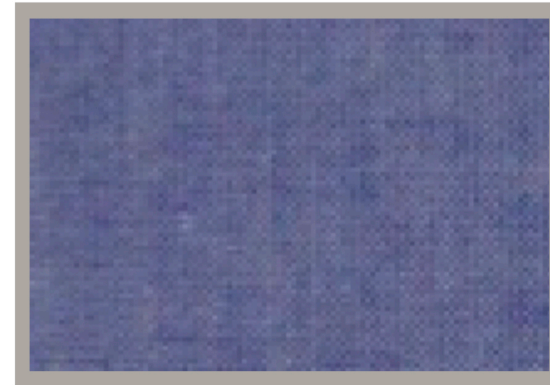
TONO: Rosa



TONO: Mostaza



TONO: Azul



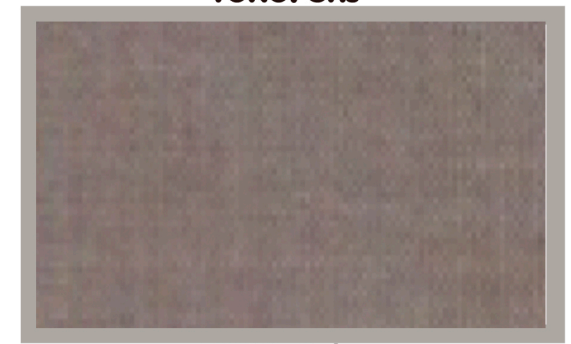
TONO: Marino



TONO: Gris



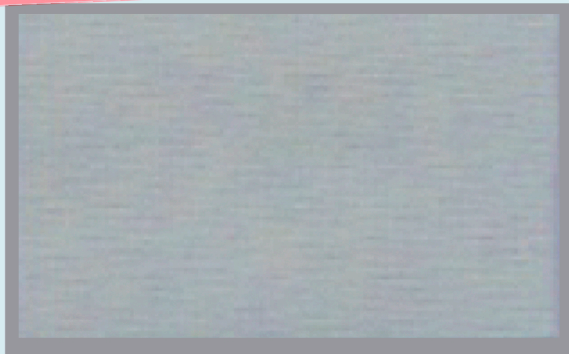
TONO: Blanco



TONO: Cafe

Mas Durabilidad, Mas Confort, Mas Rentable

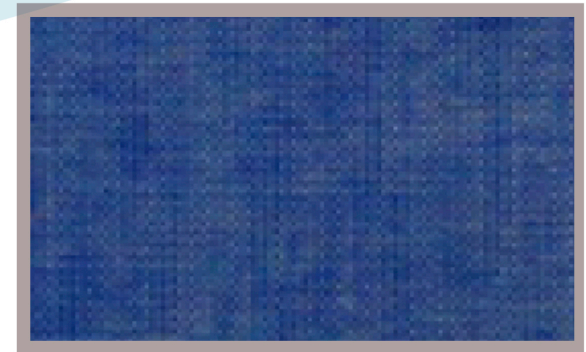
27 Oriente #812 Col. Francisco I. Madero Atlixco Puebla
 Tel: 244 44 53316 Fax:244 44 6392 Nextel: 52*270357*1
 Email: confectexa@prodigy.net.mx



TONO: Blanco



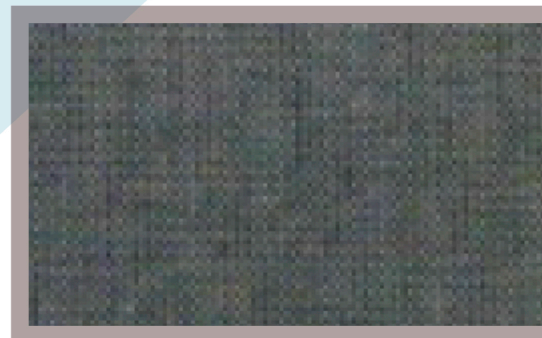
TONO: Rosa



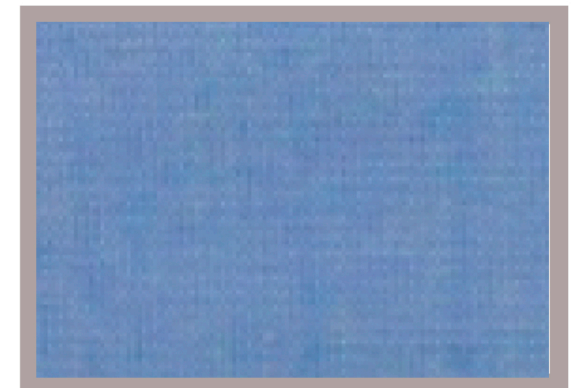
TONO: Marino



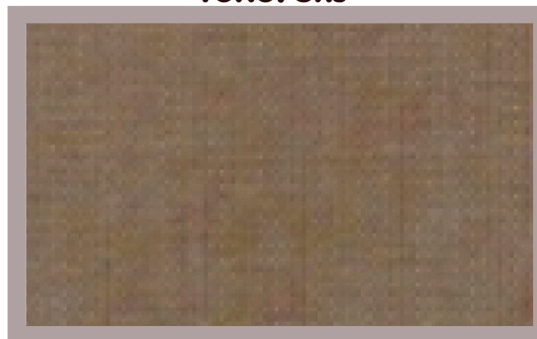
TONO: Mostaza



TONO: Gris



TONO: Azul



TONO: Cafe

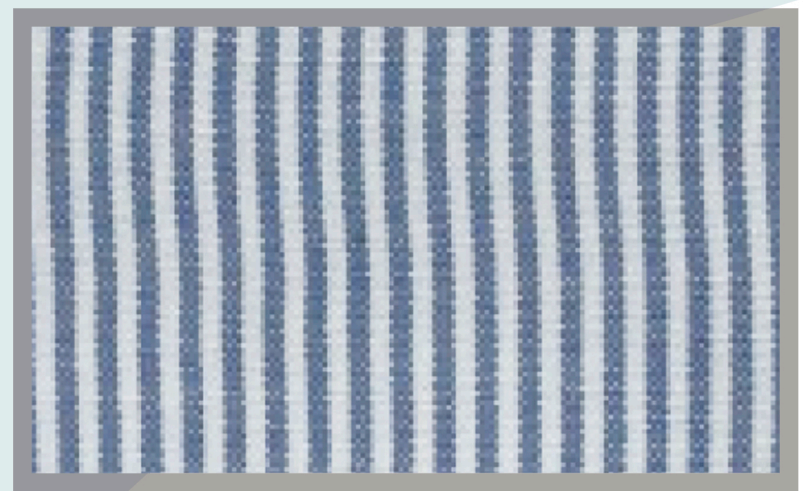
Mas Durabilidad, Mas Confort, Mas Rentable



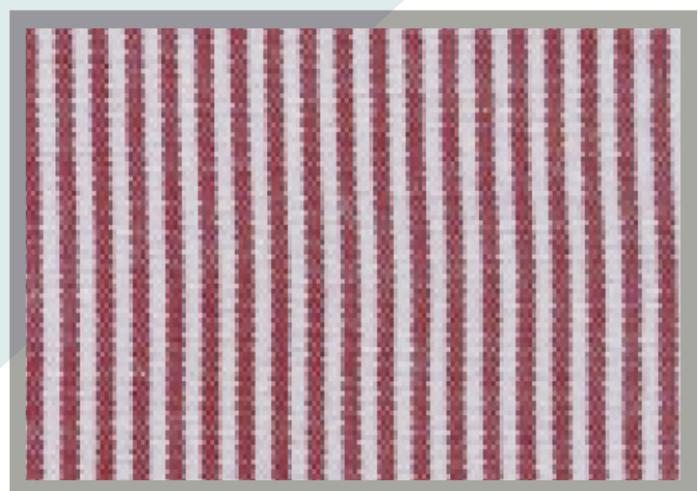
CARTA DE COLORES

TIPO DE TELA : Oxford Rayas
COMPOSICI N: 21% Poliéster
79% Algodon

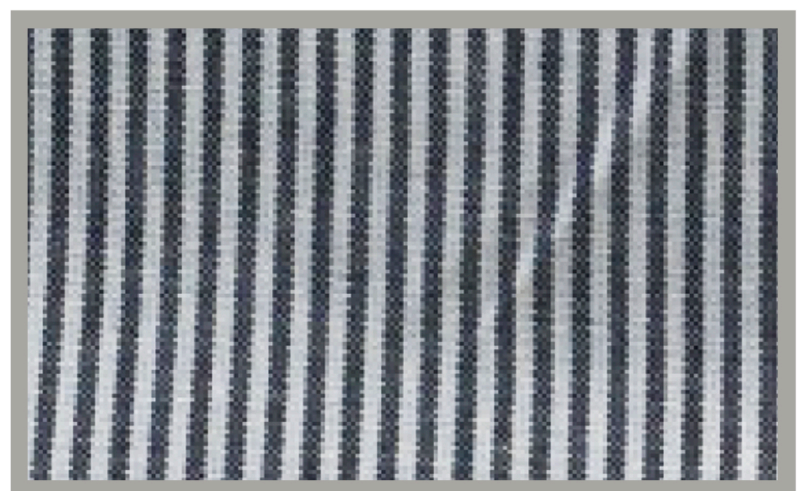
27 Oriente #812 Col. Francisco I. Madero Atlixco Puebla
Tel: 244 44 53316 Fax:244 44 6392 Nextel: 52*270357*1
Email: confectexa@prodigy.net.mx



TONO: Azul



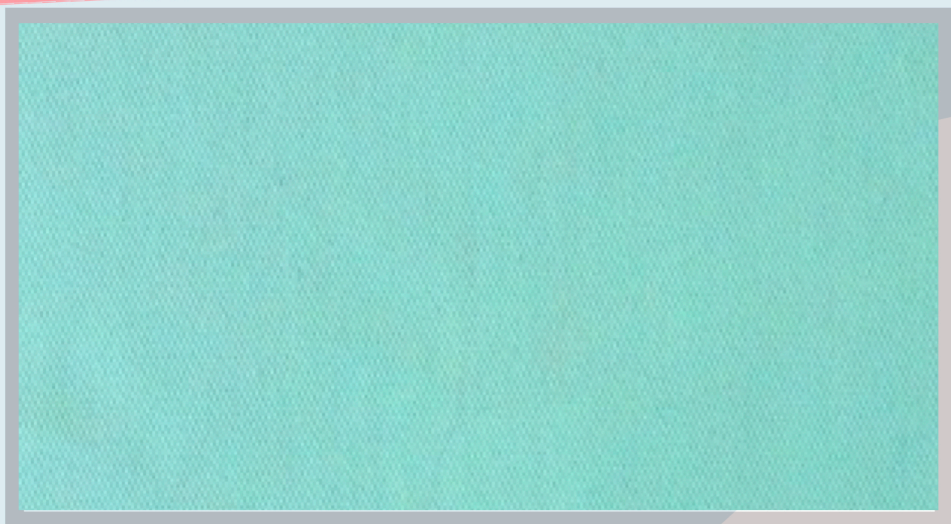
TONO: Rojo



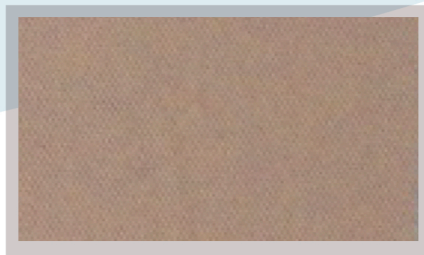
TONO: Marino

Mas Durabilidad, Mas Confort, Mas Rentable

27 Oriente #812 Col. Francisco I. Madero Atlixco Puebla
 Tel: 244 44 53316 Fax:244 44 6392 Nextel: 52*270357*1
 Email: confectexa@prodigy.net.mx



TONO : Verde Agua



TONO :Beigue



TONO: Blanco



TONO: Bandera



TONO: Plumbago



TONO: Paja



TONO: Mango



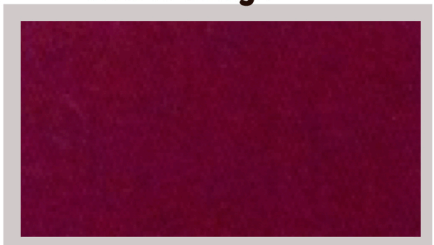
TONO: Rojo



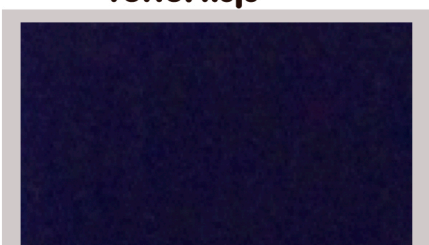
TONO : Fiusha



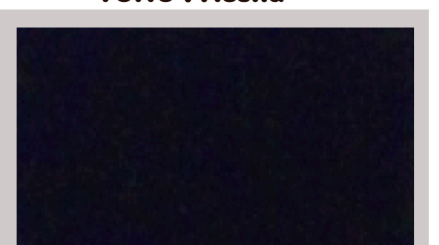
TONO: Rey



TONO: Vino



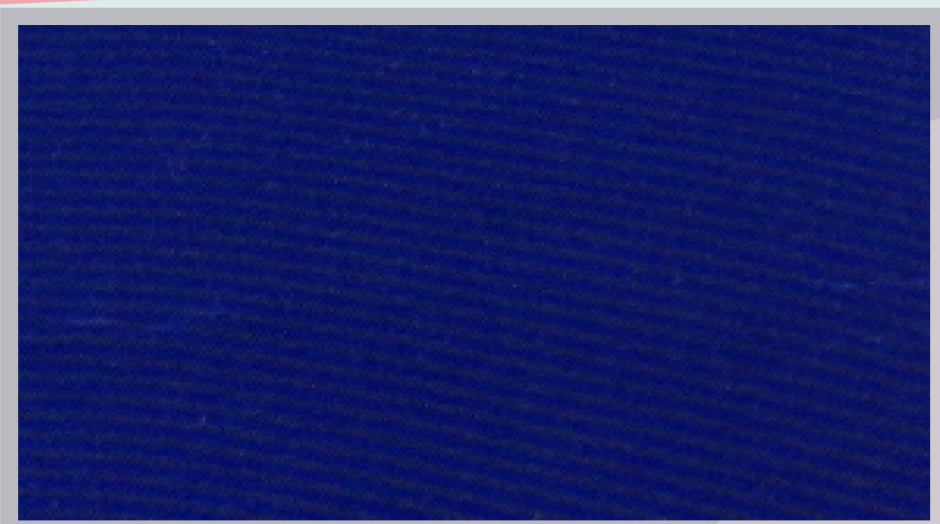
TONO: Azul Marino



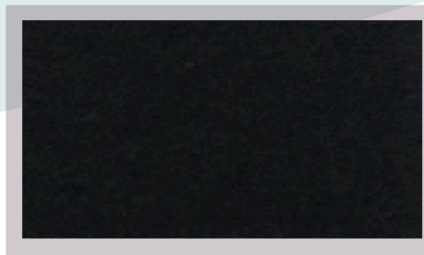
TONO: Negro

Mas Durabilidad, Mas confort, Mas Rentable

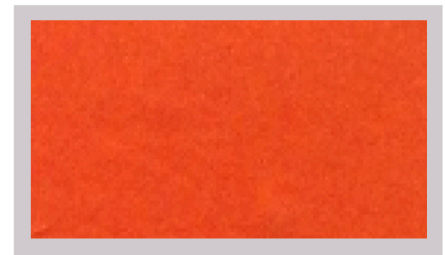
27 Oriente #812 Col. Francisco I. Madero Atlixco Puebla
 Tel: 244 44 53316 Fax:244 44 6392 Nextel: 52*270357*1
 Email: confectexa@prodigy.net.mx



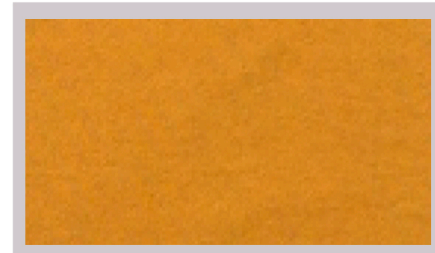
TONO : Rey



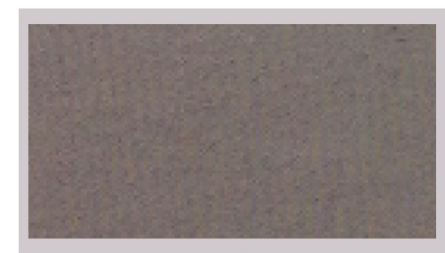
TONO : Negro



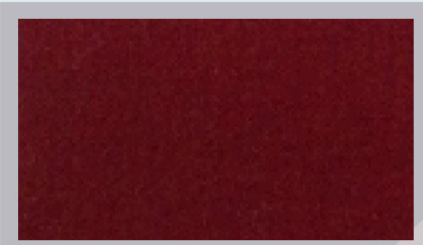
TONO: Naranja



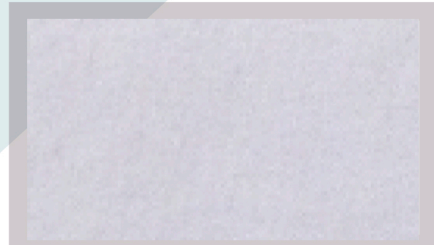
TONO: Mostaza



TONO: Gris



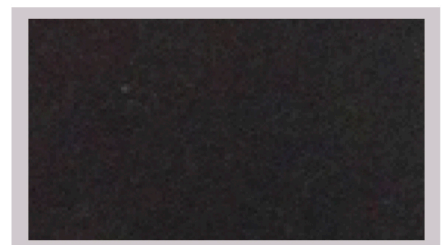
TONO: Vino



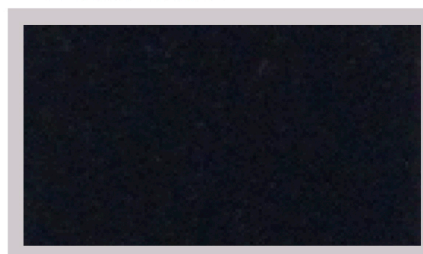
TONO: Blanco



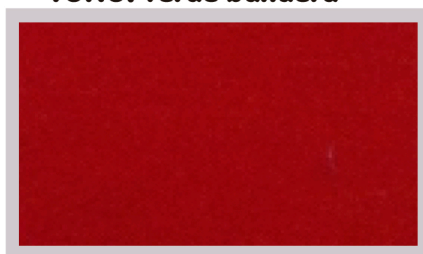
TONO: verde bandera



TONO : Gris Oxford



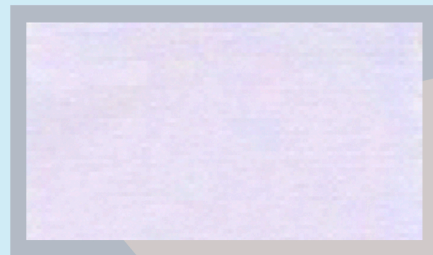
TONO: Azul Marino



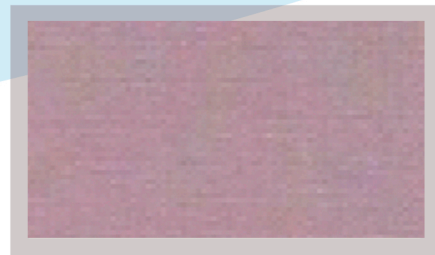
TONO: Rojo

Mas Durabilidad, Mas confort, Mas Rentable

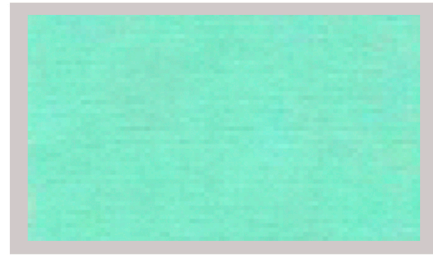
27 Oriente #812 Col. Francisco I. Madero Atlixco Puebla
 Tel: 244 44 53316 Fax: 244 44 6392 Nextel: 52*270357*1
 Email: confectexa@prodigy.net.mx



TONO : Blanco



TONO: Gris Palido



TONO: Verde Agua



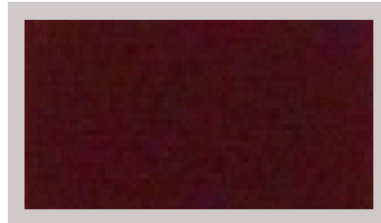
TONO: Cielo Claro



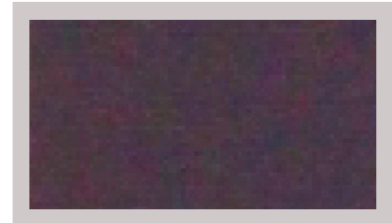
TONO: Arena



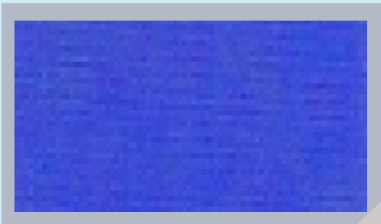
TONO: Beige



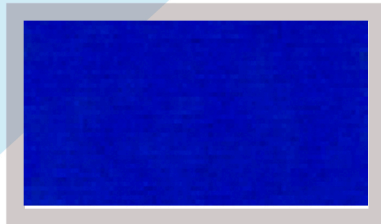
TONO: Chocolate



TONO: Gris Oscuro



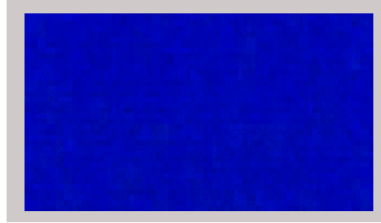
TONO: Cielo



TONO: Acero



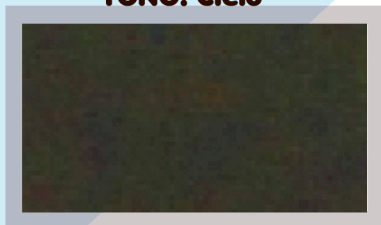
TONO: Electrico



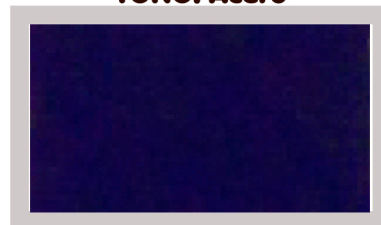
TONO : Rey



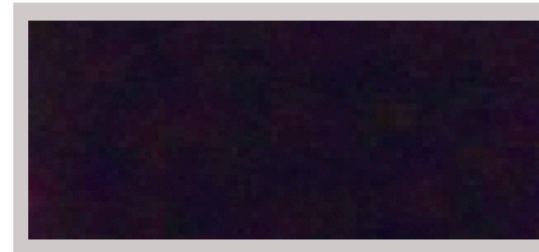
TONO: Rojo



TONO: Olivo Oscuro



TONO: Azul Marino



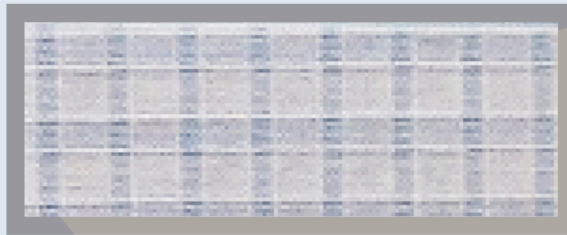
TONO: Black

Mas Durabilidad, Mas confort, Mas Rentable

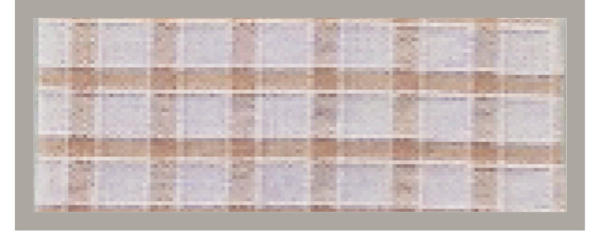
27 Oriente #812 Col. Francisco I. Madero Atlixco Puebla
 Tel: 244 44 53316 Fax:244 44 6392 Nextel: 52*270357*1
 Email: confectexa@prodigy.net.mx



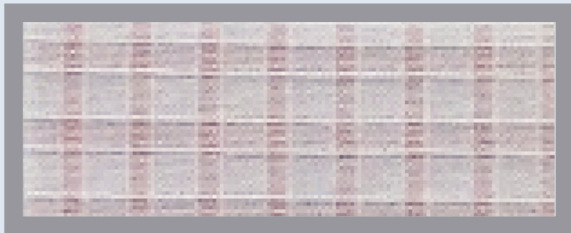
TONO: Toosie 01



TONO: Toosie 02



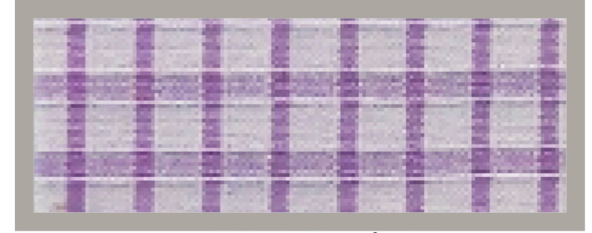
TONO: Toosie 03



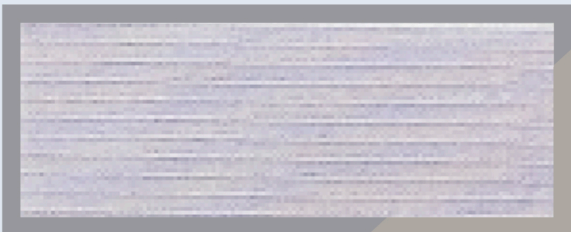
TONO: Toosie 04



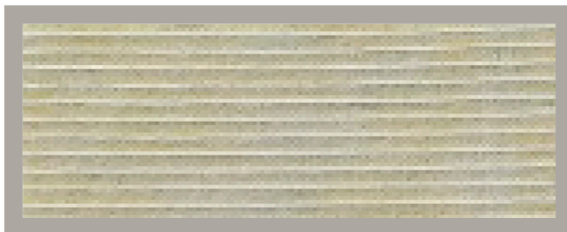
TONO: Toosie 05



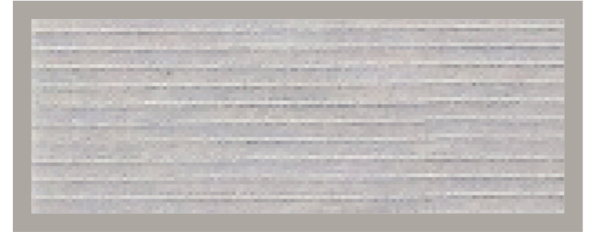
TONO: Toosie 06



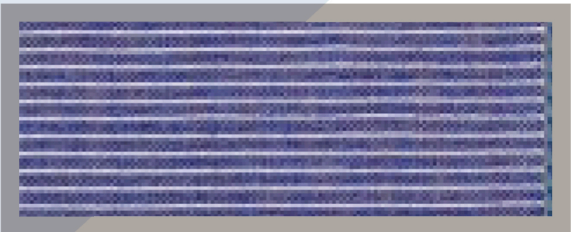
TONO: Durqueza 07



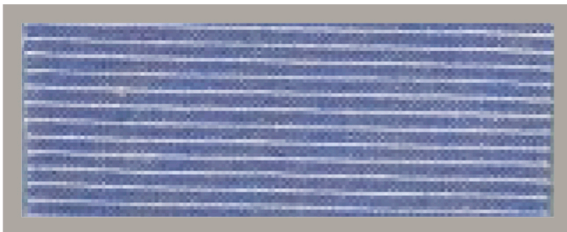
TONO: Durqueza 08



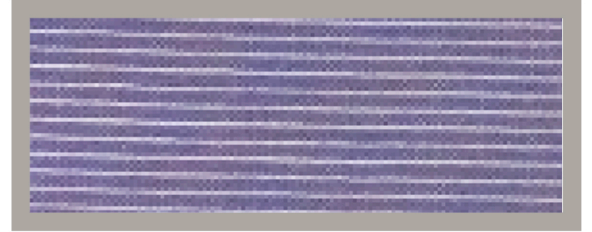
TONO: Durqueza 09



TONO: Durqueza 10



TONO: Durqueza 11



TONO: Durqueza 12

Mas Durabilidad, Mas Confort, Mas Rentable

27 Oriente #812 Col. Francisco I. Madero Atlixco Puebla
 Tel: 244 44 53316 Fax:244 44 6392 Nextel: 52*270357*1
 Email: confectexa@prodigy.net.mx



TONO : Arena



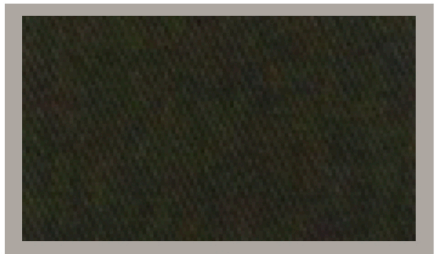
TONO: Beigue



TONO : New Khaky



TONO: Blanco



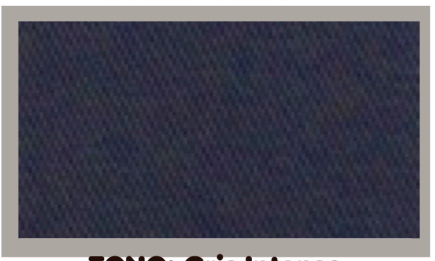
TONO: Olivo Oscuro



TONO: Militar



TONO: Gris Perla



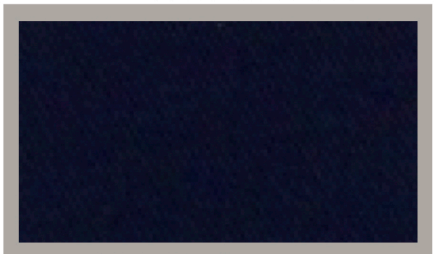
TONO: Gris Intenso



TONO: Gris oscuro



TONO: Acero



TONO: Marino



TONO: Negro

Mas elegancia, mas confort, mas durables